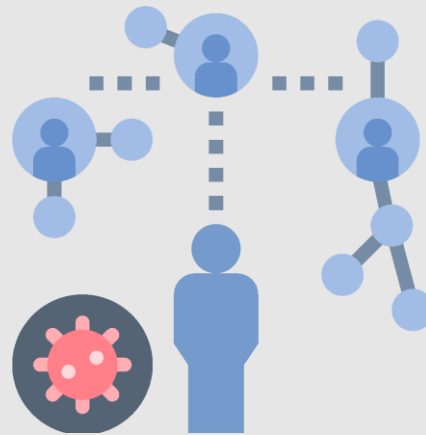


# Monitoring the Interventions



# Assessing the Response

## What do we need to know ?

- **Indicator** : Variables that help to measure the performance of a system or a part of a system
- **Benchmark** : Reference point or standard against which performance or achievements can be assessed



What were the goals of our intervention ?



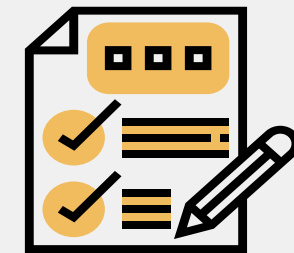
What were the expected outcomes ?



What is the timeframe of our intervention ?



Do we have some benchmarks to measure ?



Do we have some indicators ?

# What do we monitor?



## Buzz groups:

- Create 3 groups
- Identifying one or two indicators able to monitor the effectiveness of the activities. – propose a target/expected coverage
- Each group will focus on one sector activities (Health, WASH, RCCE )



## Time:

- 15 minutes

# What do we mean by monitoring the interventions ?



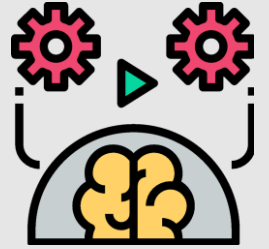
**Did we reach the expected coverage/target for this intervention?**





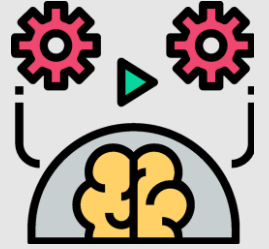
# Quiz on Indicators

Which of these indicators is a good measure of a change in practice?



- a. The number of new toilets installed in the households
- a. The availability of clean water sources in the community
- a. The number of awareness sessions held with families
- a. The percentage of people using toilets

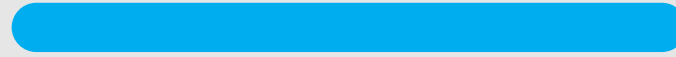
Which of these indicators is a good measure of a change in practice?



- a. The number of new toilets installed in the households
- a. The availability of clean water sources in the community
- a. The number of awareness sessions held with families
- a. The percentage of people using toilets



# True or False



**The final choice of your indicators depends on the practices you want people to change.**

**a. True**

**a. False**





# True or False

---

The final choice of your indicators will depend on the choice of practice changes you want people to have.

a. True

a. False



**One of your indicators is:**

*% of mothers (or caregivers) who can state the 4 critical times to clean hands*

**How can you measure this indicator?**

- a) Interview with community leaders
- a) Survey among women attending antenatal care services
- a) Rapid community survey in your area of intervention



**One of your indicators is:**

*% of mothers (or caregivers) who can state the 4 critical times to clean hands*

**How can you measure this indicator?**

- a) **Interview with community leaders**
- a) **Survey among women attending antenatal care services**
- a) **Rapid community survey in your area of intervention**



**What activity would have the following indicator?**

*Percentage of population using safe drinking water*

- a) **Dissemination of hygiene messages through television channels**
  
- a) **The WASH rapid response team conducting household visits and providing information on how to use chlorine tablets**
  
- a) **Installation of emergency distribution tanks in cholera-affected areas that have no access to public water network**



**What activity would have the following indicator?**

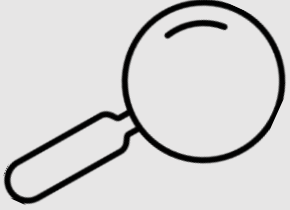
*Percentage of population using safe drinking water*

- a) **Dissemination of hygiene messages through television channels**
  
- a) **The WASH rapid response team conducting household visits and providing information on how to use chlorine tablets**
  
- a) **Installation of emergency distribution tanks in cholera-affected areas that have no access to public water network**



**Which of the following indicators monitors the outcome of training health staff on case management protocols ?**

- a) # or % of health staff trained over a 2-month period**
  
- a) % of patients screened at CTU and referred to the closest CTC due to severe dehydration**
  
- a) Number of people that are living in a cholera-affected area, experiencing AWD and went to the closest Oral Rehydration Center (ORC)**



Which of the following indicators monitors the outcome of training health staff on case management protocols ?

كيف نراقب نتيجة الدورات التدريبية للعاملين في قطاع الصحة حول بروتوكولات إدارة الحالات؟

a) # or % of health staff trained over a 2-month period

أ (عدد و %العاملين في القطاع الصحي على فترة شهرين

a) % of patients screened at CTU and referred to the closest CTC due to severe dehydration

ب % (المرضى الذين خضعوا للكشف في وحدة علاج الكوليرا CTU وهم يعانون تجفافاً حاداً وأُحليوا إلى أقرب مركز لعلاج الكوليرا CTC

a) Number of people that are living in a cholera-affected area, experiencing AWD and went to the closest Oral Rehydration Center (ORC)

ج (عدد الأشخاص الذين يعانون إسهالاً مائياً حاداً في منطقة موبوءة بالكوليرا وقصدوا أقرب نقطة علاج بالإمهاء عن طريق الفم ORC



You are monitoring one of your interventions, and you chose the following indicator:  
*% of vendors taking all 3 minimum precautions when preparing food*  
Explain.

- a) Because transmission by contaminated food is a well-documented and need to be prevented
  
- a) Because you have decided to organize some awareness sessions on cholera prevention in market places
  
- a) Because your initial assessment showed that a large part of the cholera cases bought their food to street vendors and you plan to do interventions targeting this group





You are monitoring one of your interventions, and you chose the following indicator:  
*% of vendors taking all 3 minimum precautions when preparing food*  
Explain.

- a) Because transmission by contaminated food is a well-documented and need to be prevented
- a) Because you have decided to organize some awareness sessions on cholera prevention in market places
- a) Because your initial assessment showed that a large part of the cholera cases bought their food to street vendors and you plan to do interventions targeting this group



**Which measurement method do you use to monitor the below indicator?**  
*Proportion of population using basic sanitation services in a camp?*

- a) **A rapid survey among people using renovated public latrines**
  
- a) **Focus group discussion with community leaders to understand the habits of the targeted population**
  
- a) **A rapid community survey among the targeted population to know the type of sanitation services they use on a daily basis**



**Which measurement method do you use to monitor the below indicator?**  
*Proportion of population using basic sanitation services in a camp?*

- a) **A rapid survey among people using renovated public latrines**
  
- a) **Focus group discussion with community leaders to understand the habits of the targeted population**
  
- a) **A rapid community survey among the targeted population to know the type of sanitation services they use on a daily basis**



**Which one of these 3 indicators is most relevant to measure the engagement level among key people?**

- a) % of religious leaders in the community who are engaged and participate in a training to promote hygiene education**
  
- a) % of religious leaders in the community who promote hygiene education**
  
- a) # calls received by a radio-based talk show and dial-in programmes on WASH and HEALTH Response to Cholera Outbreaks**



**Which one of these 3 indicators is most relevant to measure the engagement level among key people?**

- a) % of religious leaders in the community who are engaged and participate in a training to promote hygiene education
- a) % of religious leaders in the community who promote hygiene education
- a) # calls received by a radio-based talk show and dial-in programmes on WASH and HEALTH Response to Cholera Outbreaks



**How did you define a benchmark of (15 schools) for the following indicator:**  
*# Schools that have access to safe water?*

- a) **In affected area, the initial assessment showed that 15 schools out of 30 had inappropriate water access**
  
- a) **Considering our current technical and human capacity, we can renovate the water system in 15 schools over the next month**



**How did you define a benchmark of (15 schools) for the following indicator:**  
*# Schools that have access to safe water?*

- a) **In affected area, the initial assessment showed that 15 schools out of 30 had inappropriate water access**
  
- a) **Considering our current technical and human capacity, we can renovate the water system in 15 schools over the next month**



The following indicator:

*CFR (Case Fatality Rate) per treatment centre*

What does it monitor?

- a) Quality of care at the treatment centre
- a) Late access of symptomatic patients to health services
- a) Both





The following indicator:

*CFR (Case Fatality Rate) per treatment centre*

What does it monitor?

- a) Quality of care at the treatment centre
- a) Late access of symptomatic patients to health services
- a) Both

## To assess our cholera response, are the following indicators sufficient?

- ▶ Access to safe drinking water source
- ▶ Access to adequate/sufficient quantity of water
- ▶ Adequate distance to Public Water Points
- ▶ Access to functioning latrines
- ▶ Adequate solid waste and waste-water disposal

a. Yes

a. No

**To assess our cholera response, are the following indicators sufficient?**

- ▶ **Access to safe drinking water source**
- ▶ **Access to adequate/sufficient quantity of water**
- ▶ **Adequate distance to Public Water Points**
- ▶ **Access to functioning latrines**
- ▶ **Adequate solid waste and waste-water disposal**

a. **Yes**

a. **No**

## To assess our cholera response, are the following indicators sufficient?

- ▶ Access to decentralized treatment facilities (CTUs/CTCs) and ORPs per population according to the national standards.
- ▶ % of treatment facilities with no supply stockouts, including ORS, zinc, IVF, antibiotics (according to level of care)
- ▶ % cases in the community that are detected early and adequately managed and referred
- ▶ % of caregivers recognizing/indicating why and how to access/use ORS, breastfeeding, proper feeding, care seeking
- ▶ % coverage of target population with 2 doses of OCV

a. **Yes**

a. **No**

## To assess our cholera response, are the following indicators sufficient?

- ▶ Access to decentralized treatment facilities (CTUs/CTCs) and ORPs per population according to the national standards.
- ▶ % of treatment facilities with no supply stockouts, including ORS, zinc, IVF, antibiotics (according to level of care)
- ▶ % cases in the community that are detected early and adequately managed and referred
- ▶ % of caregivers recognising/indicating why and how to access/use ORS, breastfeeding, proper feeding, care seeking
- ▶ % coverage of target population with 2 doses of OCV

a. Yes

a. No

Which of these indicators would you use to measure a change in practice

- a. **# population reached through a radio-based talk show and dial-in programme on WASH and HEALTH Response to Cholera Outbreaks**
  
- a. **% of patients presenting at the health centre within the first 24 hours of developing symptoms**

Which of these indicators would you use to measure a change in practice

- a. # population reached through a radio-based talk show and dial-in programme on WASH and HEALTH Response to Cholera Outbreaks
- a. % of patients presenting at the health centre within the first 24 hours of developing symptoms

# Indicators ? ... benchmarks ?

---

- Percentage of target population who correctly cite two critical times for handwashing
- Percentage of affected households where soap and water are available for handwashing
- Percentage of affected population who use safe water sources
- Percentage of households that store drinking water in clean and covered containers
- Percentage of caregivers who report that they dispose of children's excreta safely
- Percentage of households using incontinence products (pads, urinal bottles, bed pans, commode chairs) who report that they dispose of excreta from adult incontinence safely

**The selection of the intervention then the indicator have been based on the initial risk assessment conducted in the affected community– it may differ from one area to the other**



# How to measure these indicators ?



- **Qualitative assessment**

- Key informant interview (semi structured questionnaire)
- Self observation (checklist)
- Triangulation with multiple interviewees

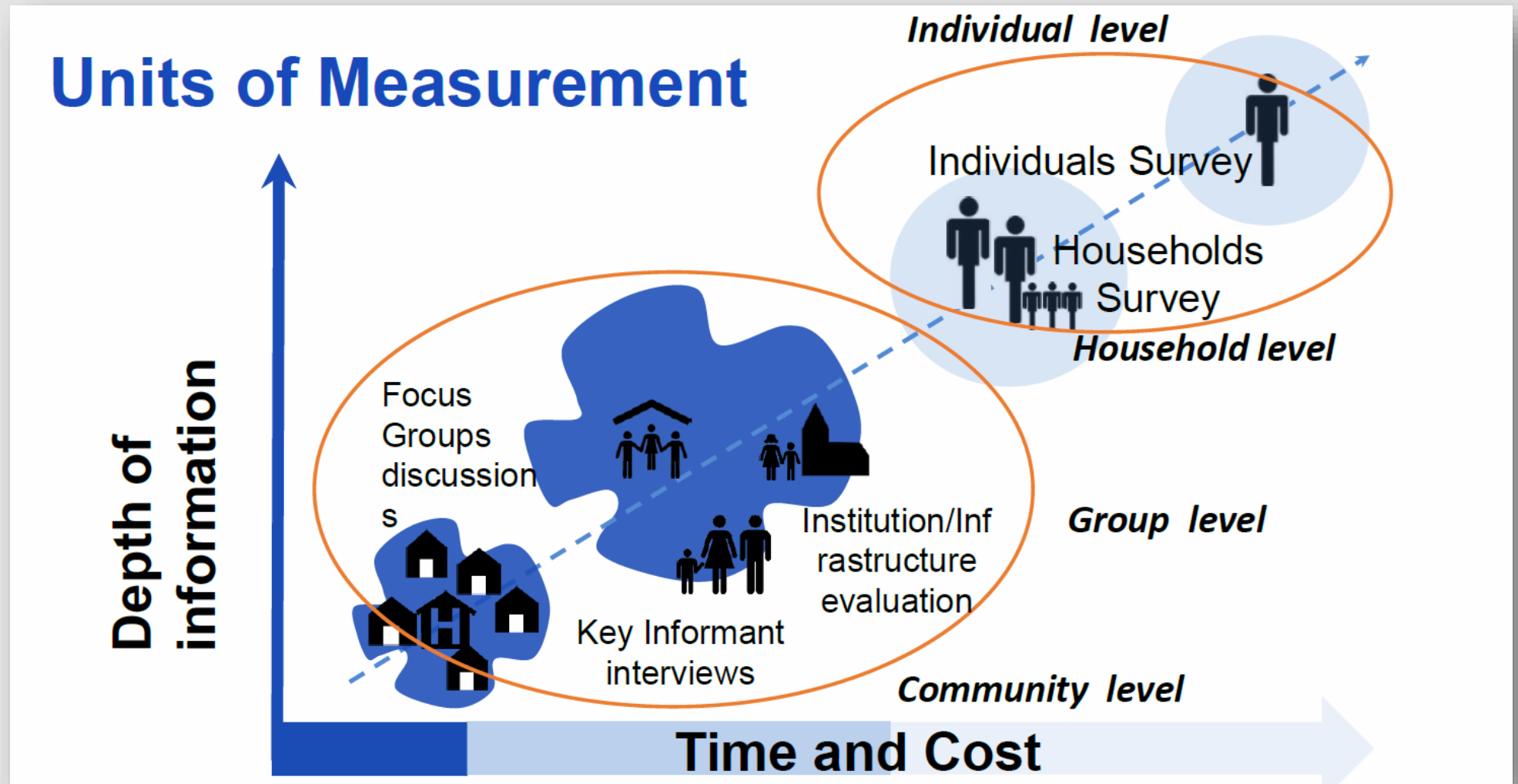
- **Quantitative surveys**



## Where to measure these indicators ?

- Among the population targeted by the intervention

# Which method applied ?



# Quantitative surveys



## Key points :

- **Population to survey** = population targeted by the intervention
- To **achieve accuracy** in our estimates, we need to calculate the **sample size**. This is based on the expected coverage or prevalence of **one key indicator**
- Questions need to be **standardized**: *questionnaire*
- **Representativeness** = randomization

‘**Quick and dirty**’ assessments can be also very informative to have a **rapid snapshot of the situation**

- Convenient sample based on time/ accessibility criteria
- 10-20 households to survey, **selected randomly**
- Systematic data collection (standardized questions)
- Characteristics of the population surveyed for discussing the potential bias before interpreting the results

**Think about secondary data : assessment done by partners**

# Group Exercise Scenario 4

---



You will be divided into breakout rooms, and the following link will be sent to you:

**Scenario four : Are we on the right track? – 40 ‘**

[https://docs.google.com/forms/d/e/1FAIpQLSfabArAWDP2dT8XG51d9JfUgUv7mFHySrvG6NTrjYceHt4StA/viewform?usp=pp\\_url](https://docs.google.com/forms/d/e/1FAIpQLSfabArAWDP2dT8XG51d9JfUgUv7mFHySrvG6NTrjYceHt4StA/viewform?usp=pp_url)